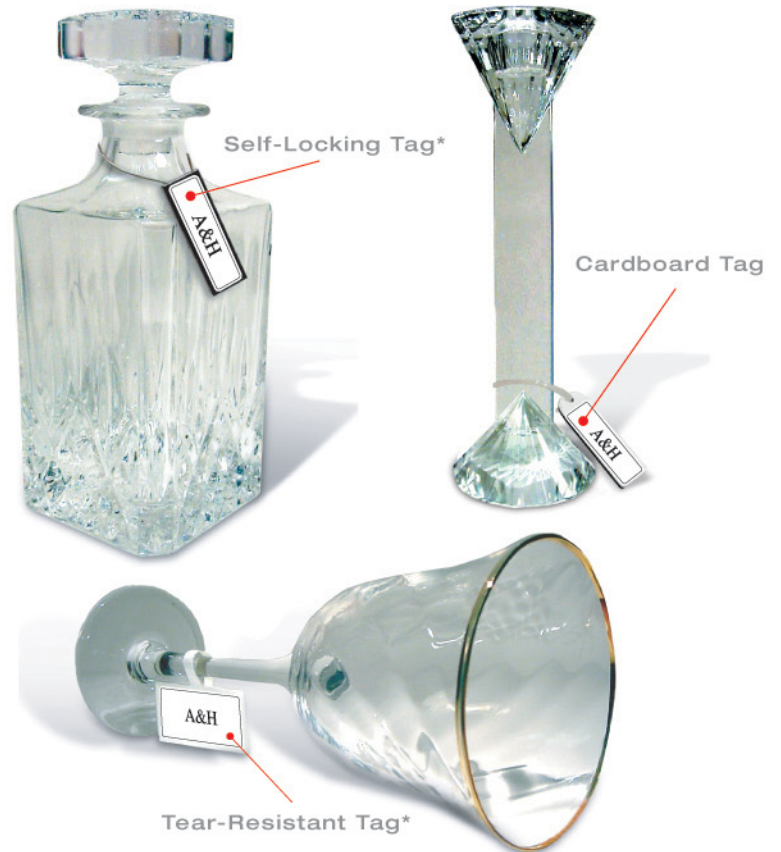


## Multiple solutions for a variety of fine household goods.

- Attractive solutions with EAS label hidden in body of tag provide cost-effective protection for unique shaped household and decorative items.
- Custom shapes and configurations available to fit your needs.
- Each tag includes an EAS label and either a multi-color label or raised imprint for brand identification.
- Tags can be applied by manufacturer, at distribution center or at store level.
- Touch or proximity deactivated.
- Barcode labels may be ordered online through our Mabel Service Bureau.
- All Sensormatic certified solutions.



\*Patent Pending

Self-locking Tag

Tear-Resistant Tag

Cardboard Tag



Style# EAS-SL01

Molded hard plastic body prevents EAS label from being twisted. Thin, poly-coated stainless steel wire won't scratch product — allows for easy insertion into the tightest openings. Available in Continuous loop or 'Noose' Design.



Style# EAS-TR01

To prevent twisting, EAS label is set in recessed channel of multi-layer board, then pressed between layers of tear-resistant material.



Style# EAS-CS01

A cost-efficient and lightweight solution, EAS label is embedded in multi-layer board. Attached to product using zip tie method (shown).

### SALES CONTACTS & ORDERING INFORMATION



**A&H, USA**  
 T 401-943-5040  
 F 401-942-1160  
 E sales@aandhusa.com

**A&H, EUROPE**  
 T 44-1403-710055  
 F 44-1403-711082  
 E sales@aandheurope.com

**A&H, CANADA**  
 T 416-498-8822  
 F 416-498-0485  
 E sales@aandhcanada.com

**A&H, ASIA**  
 T 86-769-516-6000  
 F 86-769-516-9800  
 E ahtaiping@aandhasia.net