

EAS Source Tagging Sunglasses



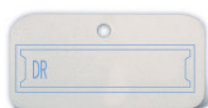
Multiple solutions for a variety of sunglasses.

- Attractive solutions with EAS label hidden in body of tag provide cost-effective protection for all types of eyewear.
- Custom shapes and configurations available to fit your needs.
- Each tag includes an EAS label and either a multi-color label or raised imprint for brand identification.
- Tags can be applied by manufacturer, at distribution center or at store level.
- Touch or proximity deactivated.
- Barcode labels may be ordered online through our Mabel Service Bureau.
- All Sensormatic certified solutions.



*Patent Pending
**US#6,330,758 B1

Cardboard Tag



Style# EAS-CC01

A cost-efficient and lightweight solution, EAS label is embedded in multi-layer board. Attached to product using zip tie method (shown).

Tear-Resistant Tag



Style# EAS-TRO1

To prevent twisting, EAS label is set in recessed channel of multi-layer board, then pressed between layers of tear-resistant material.

Heat Activated Tag



Style# EAS-HA01

Molded of hard plastic for extra strength and durability, special locking mechanism locks inside of shrink tubing and is then attached to protect when heat is applied.

Heat Activated Tag



Style# EAS-HA02

Hard plastic tag casing with built-in shrink collar (side or top mount design) prevents EAS label from being bent or twisted. Collars available in custom sizes for easy application.

SALES CONTACTS & ORDERING INFORMATION



A&H, USA

T 401-943-5040
F 401-942-1160
E sales@aandhusa.com

A&H, EUROPE

T 44-1403-710055
F 44-1403-711082
E sales@aandheurope.com

A&H, CANADA

T 416-498-8822
F 416-498-0485
E sales@aandhcanada.com

A&H, ASIA

T 86-769-516-6000
F 86-769-516-9800
E ahtaiping@aandhasia.net